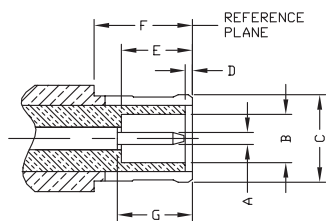
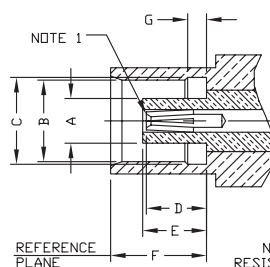


PLUG



| LETTER | INCHES [MILLIMETERS] | |
|--------|----------------------|-------------|
| | MINIMUM | MAXIMUM |
| A | .019 [0.48] | .021 [0.53] |
| B | .079 [2.00] | .082 [2.07] |
| C | .144 [3.66] | .148 [3.76] |
| D | .000 | .012 [0.30] |
| E | .111 [2.81] | .126 [3.20] |
| F | .164 [4.16] | - |
| G | .111 [2.81] | .126 [3.20] |

JACK



| LETTER | INCHES [MILLIMETERS] | |
|--------|----------------------|-------------|
| | MINIMUM | MAXIMUM |
| A | .071 [1.80] | .078 [1.97] |
| B | .135 [3.43] | .137 [3.48] |
| C | .142 [3.61] | .148 [3.75] |
| D | .091 [2.31] | .110 [2.79] |
| E | .103 [2.61] | .110 [2.79] |
| F | .158 [4.00] | .162 [4.12] |
| G | .030 [0.75] | .033 [0.85] |

NOTE 1: I.D. TO MEET VSWR AND CONTACT RESISTANCE WHEN MATED WITH .019/.021 DIA. PIN

SPECIFICATIONS

ELECTRICAL SPECIFICATIONS

IMPEDANCE: 50 Ω
 WORKING VOLTAGE RATING: 335 VRMS
 FREQUENCY RANGE: 0-6 GHZ

MECHANICAL SPECIFICATIONS

MATING: SNAP ON COUPLING
 INTERFACE: CECC 22220
 CABLING: CRIMP

PLATING

N - NICKEL
 G - GOLD

DIELECTRIC MATERIAL

T - PTFE

CABLE GROUPS

| grp | for these cable types |
|-----------|---|
| B | TIMES LMR-100A; RG-174, 188, 188A, 316/U; ALPHA 9174, 9316; BELDEN 7805A, 8216, 83269, 83284, 84316; COMMSCOPE AMC-174, WBC-100 |
| B1 | RG-316/U DOUBLE SHIELD; RD-316; BELDEN 83269; COLEMAN 1596 |
| C | TIMES LMR-195; RG-58, 58A, 58C, 141, 141A/U; ANDREW CNT-195, CNT-195-DB, CNT-195-FR; BELDEN 7806A, 8219, 8240, 8259, 8262, 9201, 9203, 9310, 9311; COMMSCOPE WBC-195, WBC-195R, 0268, TCOM-195, TCOM-195-FR; HARBOUR HPF195 |

FOR A MORE EXTENSIVE LISTING OF CABLE GROUPS



FIG. 1
RMX-8000-1B, -1C, -B, -B1



FIG. 2
RMX-8000-1B-LCK



FIG. 3
RMX-8010-1B,
-1B1, -1C, -B, -B1

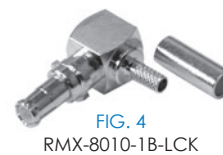


FIG. 4
RMX-8010-1B-LCK



FIG. 5
RMX-8100-B



FIG. 6
RMX-8252-1B



FIG. 7
RMX-8300, -1



FIG. 8
RMX-8350, -1



FIG. 9
RMX-8400-1

PHOTOS FOR REFERENCE ONLY, SHOWN AT 150% ACTUAL SIZE.

FOR MOUNTING CONFIGURATIONS

| PART # | FIG | DESCRIPTION | CBL GRP | NOTES | PLATING | | | RECOMMENDED TOOL |
|---------------------------------|-----|---|-----------|-----------------------------|---------|-----|-----|------------------------------|
| | | | | | BDY | P/C | DIE | |
| RMX-8000-1B | 1 | Crimp Plug | B | for RG-174/U & RG-316/U | G | G | T | RFA-4009-204 |
| RMX-8000-1B-LCK | 2 | Crimp Plug | B | for RG-174/U | G | G | T | RFA-4009-204 |
| RMX-8000-1C | 1 | Crimp Plug | C | for RG-58/U & Times LMR-195 | G | G | T | RFA-4009-206 |
| RMX-8000-B | 1 | Crimp Plug | B | for RG-174/U & RG-316/U | N | G | T | RFA-4009-204 |
| RMX-8000-B1 | 1 | Crimp Plug | B1 | for RG-316/U Double Shield | N | G | T | RFA-4009-204 |
| RMX-8010-1B | 3 | Right Angle Crimp Plug | B | for RG-174/U | G | G | T | RFA-4009-204 |
| RMX-8010-1B-LCK | 4 | Right Angle Crimp Plug with Special Locking Shell | B | for RG-174/U & RG-316/U | G | G | T | RFA-4009-204 |
| RMX-8010-1B1 | 3 | Right Angle Crimp Plug | B1 | for RG-316/U Double Shield | G | G | T | RFA-4009-204 |
| RMX-8010-1C | 3 | Right Angle Crimp Plug | C | for RG-58/U & LMR-195 | G | G | T | RFA-4009-206 |
| RMX-8010-B | 3 | Right Angle Crimp Plug | B | for RG-174/U & RG-316/U | N | G | T | RFA-4009-204 |
| RMX-8010-B1 | 3 | Right Angle Crimp Plug | B1 | for RG-316/U Double Shield | N | G | T | RFA-4009-204 |
| RMX-8100-B | 5 | Crimp Jack | B | for RG-174/U & RG-316/U | N | G | T | RFA-4009-204 |
| RMX-8252-1B | 6 | Bulkhead Crimp Jack | B | for RG-174/U & RG-316/U | G | G | T | RFA-4009-204 |
| RMX-8300 | 7 | Right Angle Jack PCB Mount | | | N | G | T | |
| RMX-8300-1 | 7 | Right Angle Jack PCB Mount | | | G | G | T | |
| RMX-8350 | 8 | Vertical Jack PCB Mount | | | N | G | T | |
| RMX-8350-1 | 8 | Vertical Jack PCB Mount | | | G | G | T | |
| RMX-8400-1 | 9 | Right Angle PCB Mount | | | G | G | T | |